

“Citizen participation is key to our criminal justice system. The more information judges have, the better equipped we are to make decisions. When citizens work with the authorities to help gather accurate and complete information, we all benefit.”

— *Presiding Judge Steven Ohmer*
St. Louis Circuit Court

“As a resident and business owner in the City of St. Louis, I know that only I and my neighbors can make my neighborhood a safe place. When we worked together to manage our own crime issues, to patrol our streets and to monitor criminal cases in our neighborhood, we had our lowest rate of crime in five years.”

— *Michael Petetit, Chairperson,*
Safety Committee, Lafayette Square

“Using best practices and imaginative strategies for community safety, stability and improvement, the Neighborhood Ownership Model casts citizens in the leading role.”

— *Francis G. Slay*
Mayor, City of St. Louis

“Our police department has some of the best technology available to law enforcement...Still, it all pales in comparison to the tremendous impact of citizen involvement. When citizens work together with police and prosecutors, it sends a message to criminals...That message is more powerful than any technology we can buy.”

— *Chief Dan Isom, St. Louis*
Metropolitan Police Department

FURTHER RESOURCES

Circuit Attorney’s Office

314-622-4941

www.circuitattorney.org

Saint Louis Metropolitan Police
Department

Non-Emergency Hotline: 314-231-1212

www.slmprd.org

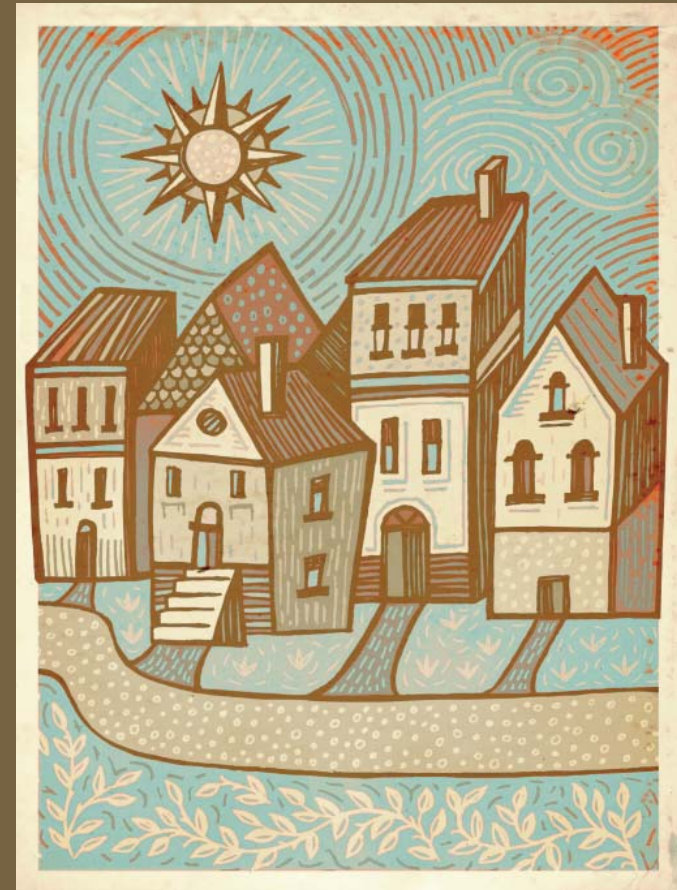
City of St. Louis

314-622-4800

www.stlouis-mo.gov

National Crime Prevention Council

www.ncpc.org



YOUR
NEIGHBORHOOD
OWNERSHIP
MODEL

City of St. Louis

YOU & YOUR NEIGHBORS ARE THE ESSENTIAL KEY TO FIGHTING CRIME IN OUR CITY.

Everyone has the right to live in a safe neighborhood. Safety can exist when residents take charge. Concerned citizens have partnered with law enforcement officials to create the Neighborhood Ownership Model — a comprehensive plan to help you take charge of long-term crime reduction in your neighborhood.

THE PROBLEM: *Lack of Participation*

Criminals target neighborhoods where they think they have a low risk of getting caught. Criminals know the neighborhoods that are more likely to tolerate bad behavior and they plan and act accordingly. Neighborhoods that do not have involved citizens are an easy target for criminal activity.

THE SOLUTION: *Active Ownership*

Criminals fear neighborhoods that don't tolerate crime. They know which communities have citizens that will call the police, show up for court and fight for justice. Neighborhoods that actively take ownership of their safety have lower criminal activity and a better quality of life.

SIX STEPS TO NEIGHBORHOOD OWNERSHIP

Creating a Neighborhood Ownership Plan can make reducing crime a manageable task. There are six simple steps to creating a Neighborhood Ownership Plan.

1. Set up a team of interested neighbors committed to reducing crime.
2. Determine what level of crime occurs in your neighborhood. What do you need to reduce this crime?
3. Use the model* to develop a written plan addressing the most pressing needs.
4. Partner with local government and law enforcement agencies to support your plan and efforts.
5. Actively implement your plan. However, remain open to adjustments as needed.
6. Finally, be persistent and patient. It takes time to implement changes and to see results.

**For a comprehensive copy of the Neighborhood Ownership Model and to seek assistance in creating your own plan, contact the Community Affairs Bureau at the Circuit Attorney's Office at 314-622-4941.*

SOLUTION EXAMPLES

Every neighborhood has different needs and challenges. No two neighborhood crime-fighting plans will look the same. By partnering with local police and support agencies, you can determine which solutions work best for you and your neighborhood. An effective plan can include a mixture of citizen, government and technology-based tactics to deter crime. Here are some examples:

Citizen-based

- Citizen safety patrol
- Neighborhood victim support team
- Neighborhood court advocates

Government-based

- Neighborhood impact statement training
- Police partnerships
- Aldermanic partnerships
- Victim support training

Technology-based

- Security cameras
- Email distribution of crime alerts
- Neighborhood website or blog
- Electronic calendaring

“The Public is the 800-pound gorilla in the criminal justice system. When they work with police, prosecutors and the courts, citizens have more power than all law enforcement agencies combined. With citizen support, we have a nearly 100 percent conviction rate.”

— Jennifer M. Joyce, Circuit Attorney